

Origins Insights

A MONTHLY PUBLICATION OF THE
CREATION SCIENCE FELLOWSHIP



April 2006

Dr. Jerry Bergman, Featured Speaker on April 25th



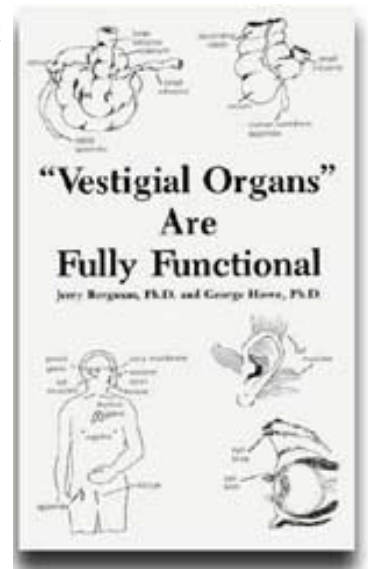
This month our featured speaker is Dr. Jerry Bergman. Dr. Bergman will present his story, *Evolutionist and Atheist to a Christian Creationist*.

Dr. Bergman has earned 9 degrees including multiple PhDs and is a very prolific writer with over 700 publications to his credit. Among these are his book, co-authored with Dr. George Howe, *Vestigial Organs are Fully Functional*, and a March 2006 ICR Impact article, Impact #393, *Theistic Evolution and the Creation-Evolution Controversy*, available on www.icr.org. More of Jerry's articles and other information can be obtained on www.answersingenesis.org.

A graduate of Medical College of Ohio, Wayne State University in Detroit, The University of Toledo, and Bowling Green State University, Dr

Bergman has taught biology, genetics, chemistry, biochemistry, anthropology, geology, and microbiology at Northwest State College in Archbold OH for over 20 years.

Don't miss this special opportunity to hear Dr. Bergman speak at Peter's Creek Baptist Church on April 25th at 7:00 pm. Admission is **FREE**. A map and directions can be viewed on our web site, www.csfpittsburgh.org.



CSF Meetings

CSF South

New Wine Harvest Church
268 Old Clairton Road, Pleasant Hills

May 23 Speaker: Robert Walsh
Mt. St. Helens:

A Creation Perspective on One of Geology's Most Remarkable Events

See details on page 3

CSF North

April 25, 2006, 7:00 pm

Peter's Creek Baptist Church
6300 Library Rd (Rt 88)
South Park, PA 15129

Dr. Jerry Bergman
Evolutionist and Atheist to a Christian Creationist

Our Design is No Accident

By Bruce Malone

Reprinted with permission from *Search for the Truth*
www.SearchfortheTruth.org

Vestigial features are those parts of an organism which are thought to be useless or no longer needed. The human tailbone is commonly thought to be such a feature. Vestigial features are taught to be leftover from an organism's ancestors as it has evolved to a new way of life. The idea of vestigial features has been used as evidence for evolution since 1859 when Darwin first proposed that such features were evidence of descent of one organism from a completely different one. The logical consequence of this alleged transformation is that the "new" creature will be left with some features which are no longer needed in it's new environmental niche.

Belief in evolution demands that we believe that each type of animal on earth is a result of descent from some previous life form. If this were the case, almost every creature should have many leftover features which are no longer needed. Yet the more we learn about biology, the more we discover that every part of an organism serves some useful function. For example, the appendix is often said to be a useless leftover part of the human body. We now know that the appendix serves as a type of lymphatic tissue in the first few months of life to fight disease. It is no more a useless feature than one of your lungs is useless just because you can survive with only one lung.

The acceptance of the idea that some parts of the human body are useless leftovers has had very tragic consequences. Based on the misguided concept that the human colon was a vestige of the past, Sir William Land and dozens of other surgeons stripped the colons from thousands of patients in order to "cure" a variety of symptoms². Many died. As late as the 1960's many people had their tonsils removed. This practice was again fueled by the mistaken belief that the tonsils were a useless leftover feature from our past. It is now known that they serve an important disease fighting function and should not normally be removed.

There are true vestigial features such as the blind eyes of cave salamanders. Blind salamanders have non-functional eyes because they live their entire lives in total darkness. At some time in the past, normal salamanders found a niche in dark caves and apparently only those who mutated to blindness had a need to stay in the total darkness where they could compete for existence without blindness being a disadvantage. However, these salamanders are still salamanders, a mutation to blindness is hardly an upward improvement in complexity, and no new information has been added to the DNA of the salamander.

As to the question of the human tailbone, anatomists tell us that the tailbone serves a very important function in the human physiology. The coccyx (tailbone) is the point of insertion of several muscles and ligaments including the one which allows man to walk completely upright. Without a tailbone, people could not walk in an completely upright manner, dance a ballet, perform gymnastics, or stroll down the street with their arm around their spouse. Hardly a useless, leftover, vestigial feature! The human body is designed for maximum versatility - it is far more versatile than the body of any other creature. What other animal can perform the range of movement required for activities as diverse as ice skating, pearl diving, skiing, and gymnastics? This range of movement would be impossible without the tailbone!

In summary, evolution predicts that there should be leftover features as one organism turns into another. Creation predicts that although some life forms have degenerated and lost use of an original function, every part of an organism was designed to serve some useful primary or backup purpose. As we learn more about the biology of living organisms, including ourselves, it is readily apparent which theory best fits the data.

1. Robert Wiedersheim, *The Structure of Man*, page 200, 1895.
2. Ian Taylor, *In the Minds of Men*, TFE Publishing, page 273, 1987.

Bob Walsh to Speak on Mt. St. Helens

On May 18, 1980 at 8:32am the most beautiful of the Cascade peaks was to change significantly. Mt. St. Helens a volcanic dome in southwest Washington State erupted in an incredible pyroclastic explosion destroying a massive amount of forest in the surrounding area. Within minutes forests were toppled like tooth-picks, geologic strata were laid down, and a Plinian cloud ascended tens of thousands of feet into the upper atmosphere.

In this remarkable multi-media presentation, Robert Walsh, past CSF Chairman and ICC Coordinator, will bring to us an exciting look into the eruption of Mt. St. Helens and examine many of its features from within a Creation perspective. The eruption of the Mt. St. Helens provides us with a "peak" into a portion of what it might have been like during Noah's flood and its ability to produce the geologic column we see today. Bob will examine catastrophic deposition of strata, coal formation, forest burial, and other catastrophic events associated with the Mt. St. Helens eruption.

If you haven't seen this presentation before, you'll not want to miss this exciting look into one of geology's most remarkable events at the CSF South meeting on May 23, 2006.

Read a Good Book Lately?

A Creation Science book, that is.

If you have and would like to provide a book review, CSF would be happy to hear from you.

Please submit your book review, 250 words or less, to bookreview@csfpittsburgh.org. Be sure to include your name along with your city and state.



Selected book reviews will appear in *Origins Insights* and/or our web site www.csfpittsburgh.org.

CSF On-Line Audio

Last month a new feature was added to the CSF web site, CSF Audio. Over the years CSF has been recording many of our meeting speakers as well as the ICC sessions. Many of these are available for purchase on cassette tape or as MP3 files on CD-ROM through our book store. Selected audio recordings will now be available for your listening pleasure on our web site, www.csfpittsburgh.org. This audio feature will change periodically so tune in often.

Our first audio features the late Dr. Henry Morris addressing the 1990 ICC. His almost 90 minute speech is truly inspiring and well worth a listen.

On a technical note, all files will be in MP3 format and best results will be obtained if you are using a high speed internet connection like cable or DSL. This feature is not streaming audio and you can download the file to your PC.

Just click  Listen

CSF Dues Coupon

If you are not current in your dues please fill out and return the coupon below with your check or money order for \$20 to:

Reid Moon
Creation Science Fellowship
P.O. Box 99303
Pittsburgh, PA 15233-4303

✂

CSF Member/Subscriber Renewal

Name: _____

Address: _____

City: _____ State: _____ ZIP: _____

Phone: _____

E-mail: _____

\$20 annual dues can be paid by personal check or money order

Creation Science Fellowship, Inc.
Newsletter is published monthly.

Purpose: The aim of Creation Science Fellowship is to inform and educate people of the biblical, philosophical and scientific validity of creationism.

Circulation: 430

Officers
Reid MoonChmn./Sec./Treas.
Stu Chandler.....CSF Books
Jim Hawk.....Board Member
Phil McCaffrey.....Speaker's Bureau
Greg Smith/Tom Duke.....CSF South
Robert Ivey.....Web Site/Newsletter
Steve Sobek.....Publicity Chairman

Email: csficc@csfpittsburgh.org
Web Site: www.csfpittsburgh.org

Non-Profit Org.
U.S. Postage
PAID
Pittsburgh, PA
Permit No. 2548

CREATION SCIENCE FELLOWSHIP, INC.
P.O. Box 99303
Pittsburgh PA USA 15233-4303
Phone: (412) 341-4908

Address Service Requested